

Secomea GateManager BASIC Guide

Learning Secomea Remote Access






This guide is intended for first time users of the Secomea remote access solution, who have ordered a Secomea Starter Package

This guide will lead you through different roles and processes related to installing and configuring the **SiteManager**, **GateManager** Administration of users and using **LinkManager**.

Version: 1.3. march 2015



Table of Contents

1. Introduction	3
1.1. Prerequisites for This Guide	3
1.2. Component Analogies	3
1.3. About Roles referred to in this Guide:	4
1.4. Illustration of Role locations	4
1.5. If something should not work out as expected	5
2. ROLE: SiteManager Installer 	6
2.1. Configure GateManager settings using the Appliance Launcher	6
2.2. Deciding a Device connection method	12
3. ROLE: GateManager BASIC Admin 	13
3.1. Install the GateManager Administrator certificate	13
3.2. Create LinkManager user	14
4. ROLE: LinkManager User 	15
4.1. Install the LinkManager	15
4.2. Connect to the SiteManager GUI	17
4.3. Configure the SiteManager Network settings	18
4.4. Configure the SiteManager Device Agent	20
5. Summary	24
6. Upgrading your GateManager Administrator account from BASIC to PREMIUM (P/N 26473)	25
Notices	26



1. Introduction

1.1. Prerequisites for This Guide

Prerequisites for this guide are:

- You have administrator privileges to install a program on your Windows PC or laptop.
- Preferably you are located in a network that assigns IP addresses by DHCP (also for equipment other than PCs).
- Your PC has outgoing access to the Internet via https. This applies for both your corporate firewall and any personal firewall installed on your PC.
- You have received a SiteManager hardware appliance.
- You have access to a spare port on an Ethernet switch or wall outlet to which you can connect the SiteManager (can be on the same network as your PC, but could also be in another network, as long as it has outgoing access to the Internet). Alternatively the Uplink2 b connection can be used.
- You have a network enabled device in your network that you can use as “remote monitored device”. This could be a PLC or similar or just a web enabled network device, such as your workgroup printer.
- You have received, by email, a GateManager certificate with a link to the web based GateManager administrator portal.
- Preferably you have a login account for the Secomea partner web site, for download of supplementary information on <http://info.secomea.com/RDM-documentation> (if not choose **Register** at the top right of the Secomea web site).

1.2. Component Analogies

With the Secomea Remote Access solution you are introduced to three components. To place them into a context that you may be familiar with, we have made analogies to traditional modem solutions:


- **SiteManager Hardware appliance.** This compares to the traditional dial-up modem attached to the machine at the customer site. The big difference is that one SiteManager can provide access to multiple machines (both IP, Serial and selected USB devices), and it can utilize the existing network infrastructure to obtain Internet connection (some models also support 3G).
- **LinkManager Client Software.** This compares to the modem dial-up software on the service engineers' PC. The big difference is that the service engineer does not need to administer a list of phone numbers. The list of devices that the service engineer can connect to, is automatically updated when a new SiteManager is connected, and when the SiteManager is configured with new device agents. Point and click and the LinkManager user get instant access to the device over the Internet.
- **GateManager Server.** This component acts as a switch-board for connections between LinkManagers and SiteManagers, and ensures that neither LinkManagers nor SiteManagers need to have public addresses on the Internet. For the BASIC package the GateManager is used only for administering users, but you can upgrade to a domain administrator account that allows you to check logs, fine grain LinkManager access to certain devices etc. (read more in section 6. **Upgrading your GateManager Administrator account from BASIC to PREMIUM (P/N 26473)**).



1.3. About Roles referred to in this Guide:

Through the document the header will indicate the role you are undertaking.


Roles will be marked as follows:



SiteManager Installer

This role covers the following tasks:


- Physically Install SiteManagers (often done by the service engineer or the customer).
- Configure network settings (primarily initial GateManager access).
- Optionally configure device agents on the SiteManager, if not done by the LinkManager user.



GateManager BASIC administrator

This role covers the following tasks:

- Creating and administering LinkManager user accounts.



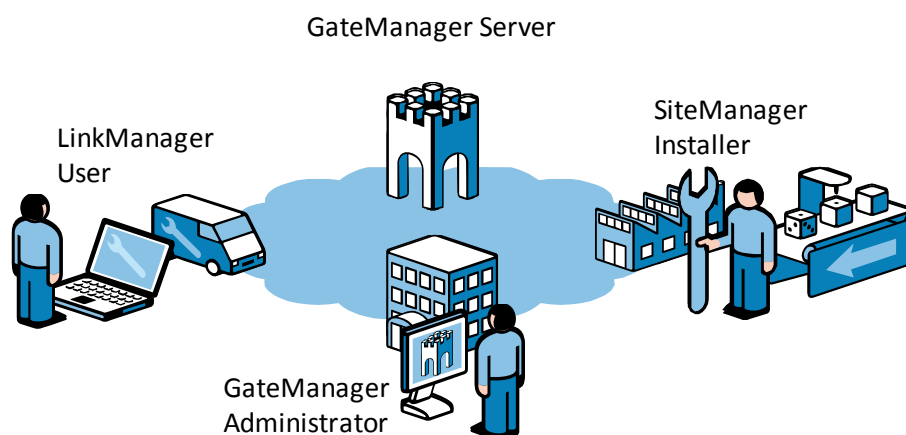
LinkManager User

This role is held by the PLC programmer or service engineer:

- Connect remotely to equipment for servicing/programming the equipment.
- Optionally configure the SiteManager and device agents on the SiteManager, if not done by the SiteManager Installer role.

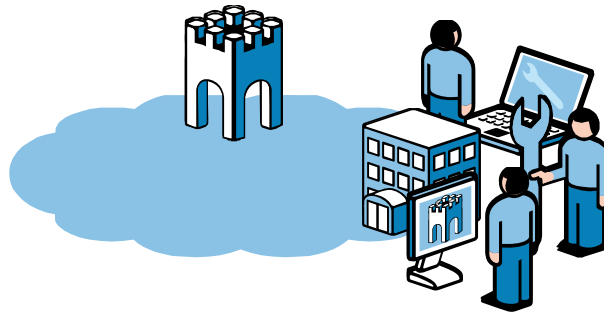
1.4. Illustration of Role locations

The typical setup of the relative to the Internet would be like this:





However, following this guide for the first time, you will probably play all roles and be physically located more like this:



1.5. If something should not work out as expected

We experience that this guide works for 95% of all users, whereas the last 5% may be subject for a little more advanced configurations depending on special infrastructure setup.

The solution does allow for adaptation to highly complex and security restricted infrastructures involving e.g. a Web proxy or NTLM authorization server, but it is out of scope of this guide to elaborate on.

If you run into problems, then do not hesitate to contact us and we will guide you in the right direction, or help you troubleshoot.

You can also consult our document library here:

<http://www.secomea.com/industry/support/documentation/>

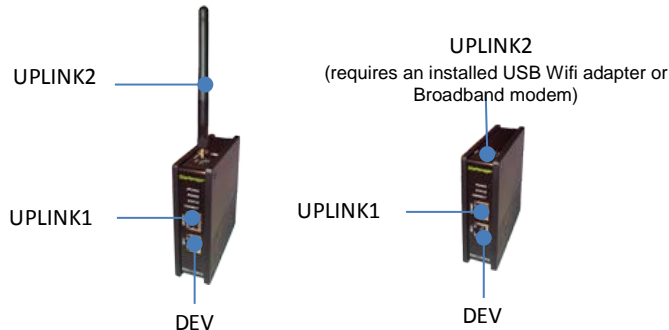
or the FAQ section here:

<http://www.secomea.com/industry/support/faq/>



2. ROLE: SiteManager Installer

You should have received a new un-configured SiteManager unit.



2.1. Configure GateManager settings using the Appliance Launcher

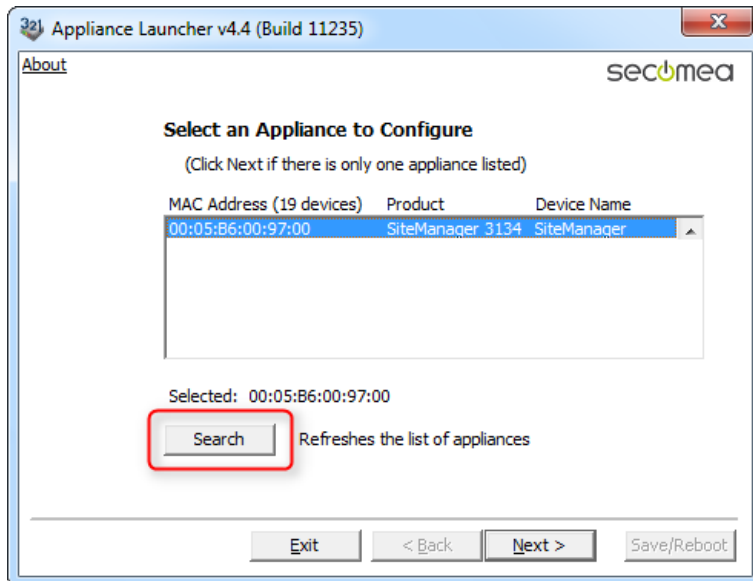
Hint: The steps in this section can actually be performed before sending the SiteManager to its final destination.

1. Download and install the Secomea Appliance Launcher from this location: <http://info.secomea.com/appliance-launcher>
2. Use a standard Ethernet cable to connect the SiteManager's Ethernet Uplink/Uplink1 port to your local network.

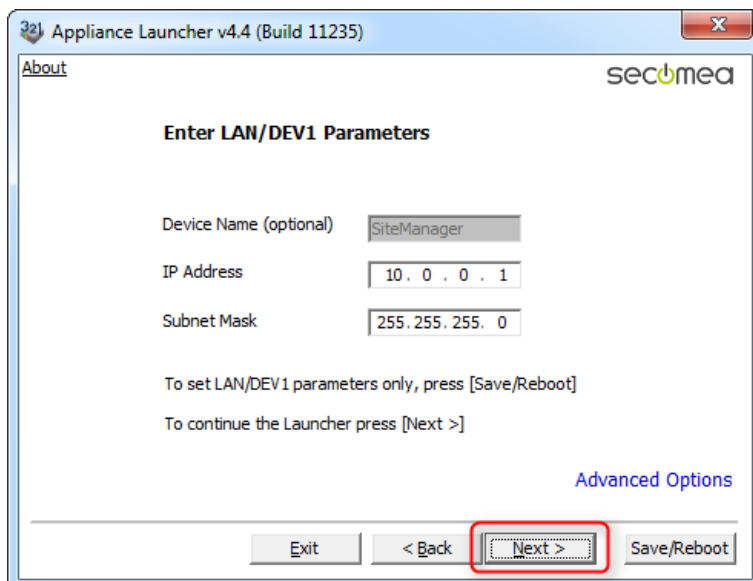
(Alternatively you can connect directly your PC LAN port to the SiteManager's Uplink port using an Ethernet cable. Both standard and cross-wired cables will work)
3. Connect power wires to the SiteManager screw terminals according to the leaflet included in the SiteManager package.
4. Power on the SiteManager, and wait about 30 seconds.



5. Start the Appliance Launcher program, if the SiteManager does not appear immediately; press the **Search** button repetitively until the SiteManager appears.



6. Click **Next** to get to the **LAN/DEV1** configuration page. For now, we do not need to do anything here. We can configure this remotely via the LinkManager later if needed.





- Click **Next** to enter the **WAN/UPLINK** page. Since we assume the SiteManager to be connected to your corporate network, you can leave the setting to DHCP, and it will automatically get an IP address and a default gateway from your corporate DHCP server.

Appliance Launcher v4.4 (Build 11235)

About

sec^omea

Enter WAN/UPLINK Parameters

WAN/UPLINK Settings

Mode:

IP Address:

Subnet Mask:

Default Gateway:

ISP Settings

Username:

Password:

Exit < Back Next > Save/Reboot

- Click **Next** to enter the **WAN2/UPLINK2** page. This is only used for configuring a broadband or WiFi Uplink.

Appliance Launcher v4.4 (Build 11235)

About

sec^omea

Enter WAN2/UPLINK2 Parameters

WAN2/UPLINK2 Settings

Mode:

IP Address:

Subnet Mask:

Default Gateway:

ISP Settings

SIM PIN Code:

APN:

Exit < Back Next > Save/Reboot

Hint: If you already now have decided to use the 3G/GPRS option, you should just enter the Pin code of the SIM card here. Note that you can always enter this information via the SiteManager web GUI later.



9. Click **Next** to get to the **GateManager Parameters** page.

IMPORTANT: The information to enter in this screen is found in the email you received from the GateManager with the GateManager X.509 Certificate.

GateManager X.509 Certificate for JohnJohn on Secomea VPNLAB GM5_ESXi

GateManager [admin@gatemanager]

Extra line breaks in this message were removed.

Sent: sø 05-02-2012 12:18

To:

Message | JohnJohn.gmc (3 KB)

Hello John John

This mail contains a new X.509 certificate for the Secomea GateManager administrator login.
The password associated with the certificate will be informed to you verbally or in a separate mail.

Save the attached file, JohnJohn.gmc, in your Windows "My Documents" folder.

Follow this link to the GateManager administrator login screen:
<http://130.226.210.167/admin> It is recommended to bookmark this page in your browser. The login screen will ask you to load the certificate file and enter the password.

-----Additional info-----

The certificate in this mail is issued to user "JohnJohn" in domain "SecomeaVar" on server "Secomea VPNLAB GM5_ESXi".

Secomea appliances, such as a SiteManager that should be administered by this account or by LinkManager users created by this account, should be configured with the following GateManager settings:

GateManager Server: 130.226.210.167
GateManager Token: SecomeaVar

For more information please check www.secomea.com

Best regards
Peter Hansen
Mobile: +45 11223344



10. For the **GM Appliance Name** you should decide a meaningful name, such as the location of the SiteManager. For example **SiteA**

Appliance Launcher v4.4 (Build 11235)

About

sec^omea

Enter GateManager Parameters

GateManager IP address: 130 . 226 . 210 . 167 DNS

GM Domain Token: SecomeaVar

GM Appliance Name: SiteA

Web-Proxy IP address: . . . DNS

Web-Proxy Account:

Web-Proxy Password:

To disable the GateManager functionality - clear the GM Address field.

Exit < Back Next > Save/Reboot

11. Click **Next** to get to the Finish screen, Check the box to preserve password:

Appliance Launcher v4.4 (Build 11235)

About

sec^omea

Finish

Press the [Save/Reboot] button to save your settings and reboot the appliance.

Pressing Exit will exit the Launcher and no changes will be saved.

☒ Check here to preserve password (Default is not checked)

<Click> - copy current settings to clipboard

Exit < Back Save/Reboot

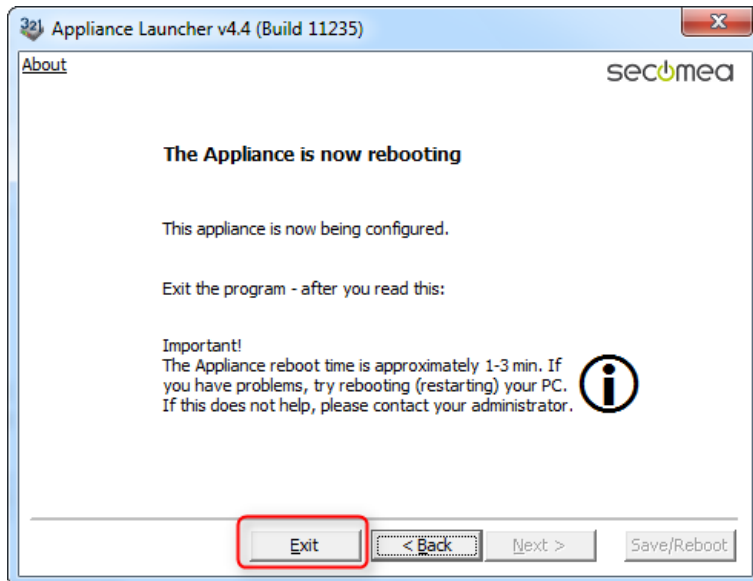
Note: by selecting “preserve password” the password for local login to the administration Web interface of the SiteManager will remain **admin**.

If unchecked the password will be changed to the SiteManager's MAC address.

Logging in to the SiteManager via the LinkManager does not require password.



12. When clicking **Save/Reboot** you should get the following page (if not, you can try to click Back to the first screen, and click Next again until the Save/Reboot screen) appears.



13. If the SiteManager has received a DHCP assigned IP address, and either port 11444, 443 or 80 are allowed Internet access with SSL/TLS encryption by the network firewall, the SiteManager will now connect to the GateManager.

Check the leaflet enclosed with your SiteManager for the LED signaling of "GateManager Connected".

If you are connecting via a 3G/GPRS modem connected to the Uplink2 USB port, the same LED status signaling will apply.

You do not need to do more local to the SiteManager.

In reality you could now ship the SiteManager to a new site.

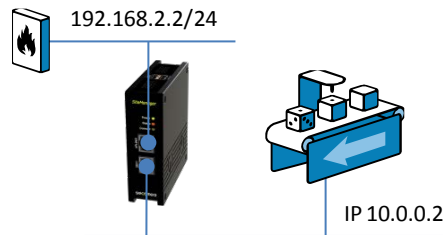
Once the Ethernet Uplink1 port is connected at the new site, or the Uplink2 port has connected to the WiFi access point or broadband provider, the SiteManager will receive a new DHCP address, and attempt connecting to the GateManager over the Internet.



2.2. Deciding a Device connection method

Note: The SiteManager can also provide access to serial devices or USB devices, by attaching them to the RS232 DB9 connector, or the USB connector of the SiteManager. The following will concentrate on Ethernet devices only.

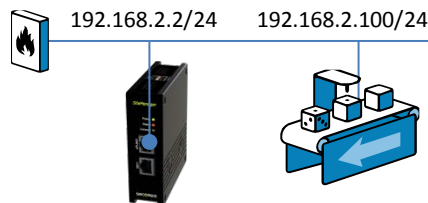
14. The typical way of deploying a SiteManager and the devices to be managed, is to utilize the SiteManager's ability to completely isolate the devices from the corporate network, like this (IP addresses are just examples):



HINT: The machine depicted as 10.0.0.2, can be attached through a switch, or directly with an Ethernet cable to a **DEV** port. Optionally, the SiteManager can be configured to assign the address to the devices on the DEV ports by DHCP.

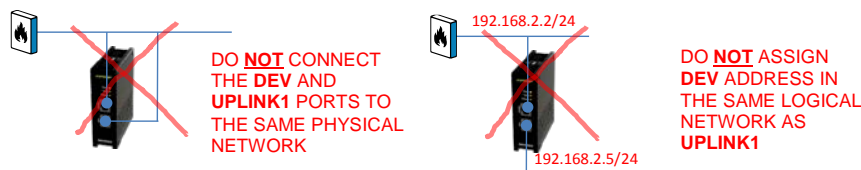
(/24 noted after after the IP address is just the standard TCP notation of a subnet mask of 255.255.255.0)

15. You can, however, also monitor a device already on the corporate network (the Ethernet **Uplink** side), and no further network configuration of ports are required on the SiteManager (if you are using Uplink2 to connect a 3G/GPRS modem, you will have to connect equipment on the DEV port as shown above, and configure the DEV port IP settings correspondingly)



NOTE: The machine depicted represents the network device you want to use as "remote monitored device" for this exercise. You can, however, use any IP enabled device, such as a PLC, HMI or even a PC or a printer. In the following we are using a PLC attached on the DEV side of the SiteManager.

16. IMPORTANT:





3. ROLE: GateManager BASIC Admin

3.1. Install the GateManager Administrator certificate

17. Locate the email you received from the GateManager with the **GateManager X.509 Certificate**, and save the attached file to your "My documents" folder:

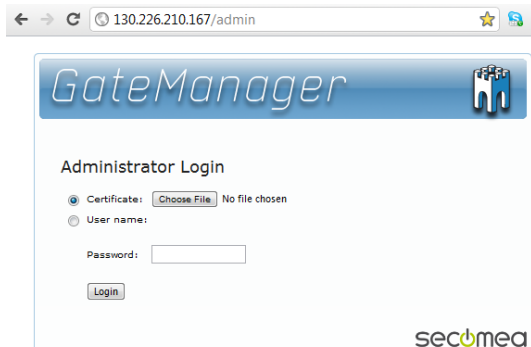


18. Open the link in the same email. (There may be two links with a DNS name and IP address respectively and you can use either of them).

Save the attached file, JohnJohn.gmc, in your Windows "My Documents" folder.

Follow this link to the GateManager administrator login screen:
<http://130.226.210.167/admin> It is recommended to bookmark this page in your browser. The login screen will ask you to load the certificate file and enter the password.

19. This will open the login screen of the GateManager:



Note: The GateManager administrator portal requires minimum MS Internet Explorer 9, Apple Safari, FireFox or Google Chrome.

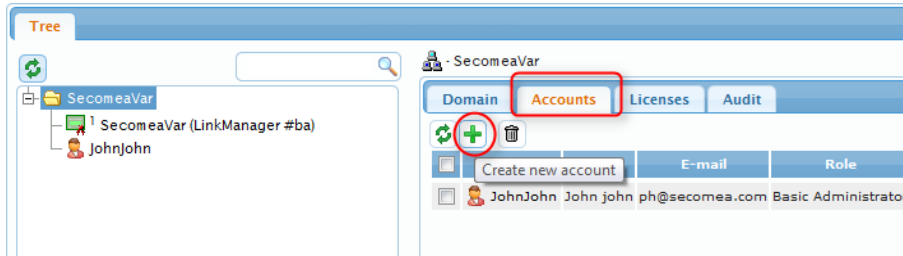
20. Select Choose File and browse for the certificate you just saved, and enter the password you were informed by the administrator.

If you have not yet received the password via email, SMS or verbally, you should take contact the person that is listed in the **signature section** of the email with the certificate (do not hit reply on the email, as it is auto-generated from the GateManager).



3.2. Create LinkManager user

21. When logged in select the **Accounts** tab, and select the “+” icon to create a new account



22. Fill in the following information

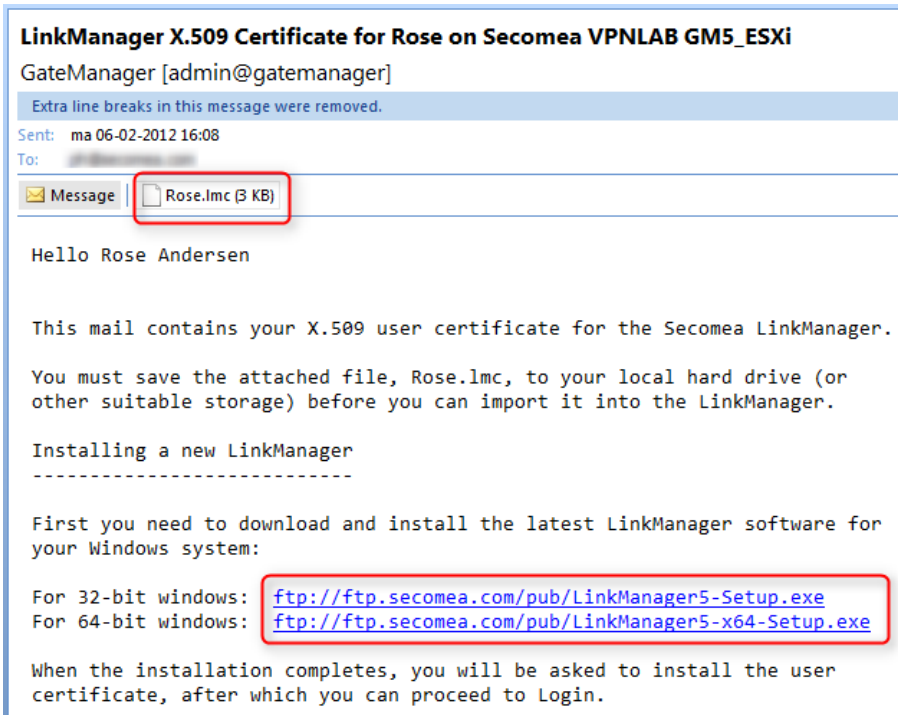
- ❶ The **Account name**. This will become the file name of the LinkManager certificate file (in this case Rose.lmc).
- ❷ **Person Name, Email** and optionally **Mobile**. In this exercise you will likely issue the account to yourself. You can later create accounts for other users (All users will share the same LinkManager floating license).
- ❸ Type a **Password**. If you create the account for another use, you should inform this password to the user verbally or in a separate email.
- ❹ When pressing **Save**, the email is automatically sent from the GateManager.



4. ROLE: LinkManager User

4.1. Install the LinkManager

23. The previous step has generated an email from the GateManager that includes a LinkManager certificate (.lmc). Save the attached certificate to your computer.




24. Download and install the LinkManager software by clicking the appropriate link in the email.

IMPORTANT: You must have administrator privileges on the PC in order to install LinkManager.

LinkManager will not work if installed on Windows running inside a VBox virtual machine. Always install LinkManager on the host OS. You can still run your programming software inside a virtual machine and connect to devices via the LinkManager on the host OS if the virtual machine is configured for "NAT".

25. Eventually, when you click Finish in the installation wizard, the LinkManager icon will after a while turn green in your Windows system tray, and your default web browser will open, showing the LinkManager Web GUI.



Hint: If The LinkManager icon remains yellow  for a long while, it could indicate that something on the PC is preventing the LinkManager from starting correctly. Consult the FAQ here for trouble shooting info:

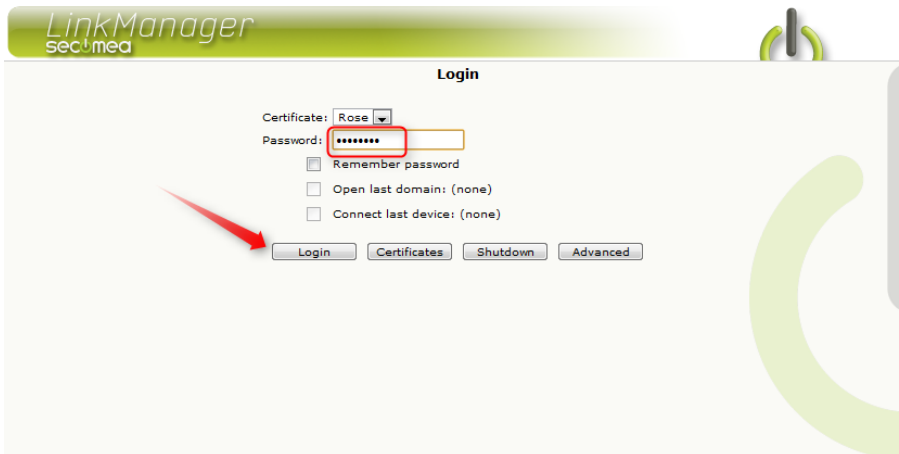
<http://www.secomea.com/industry/support/faq/>



26. **Browse** for the certificate you just saved and enter the password you specified for the account in step **22**:



27. When clicking **Install**, you will be prompted to login. Repeat the password from above, and click **Login**:



Hint: If you get an error logging in the first time, try once more. This can happen in some cases with brand new accounts.

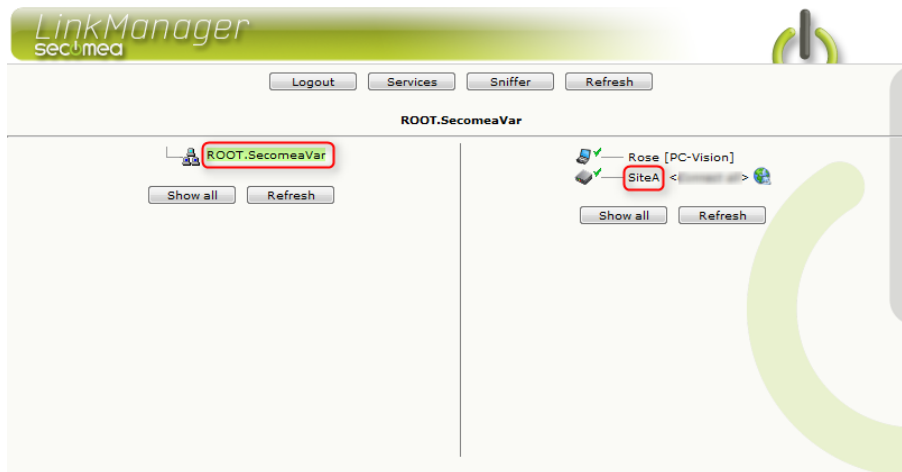


4.2. Connect to the SiteManager GUI

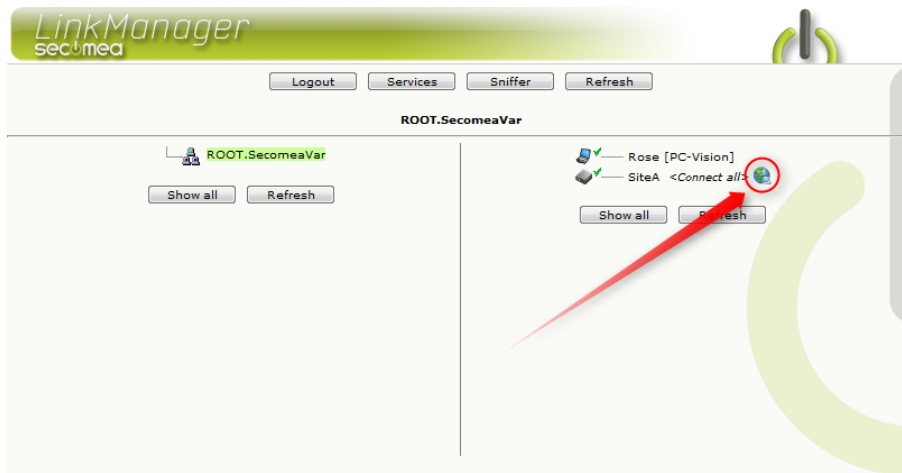
28. When you are successfully logged in via the LinkManager Console, you will get a menu where the left frame displays your domain on the GateManager.

You will notice that it is the same domain as you defined earlier as “GM Domain Token” in the SiteManager.

Subsequently the SiteManager should also have shown up in the right frame by the name you defined for it. In this case **SiteA**



29. Click the **Globe** icon next to the SiteManager to establish a connection to the SiteManager's configuration GUI.





4.3. Configure the SiteManager Network settings

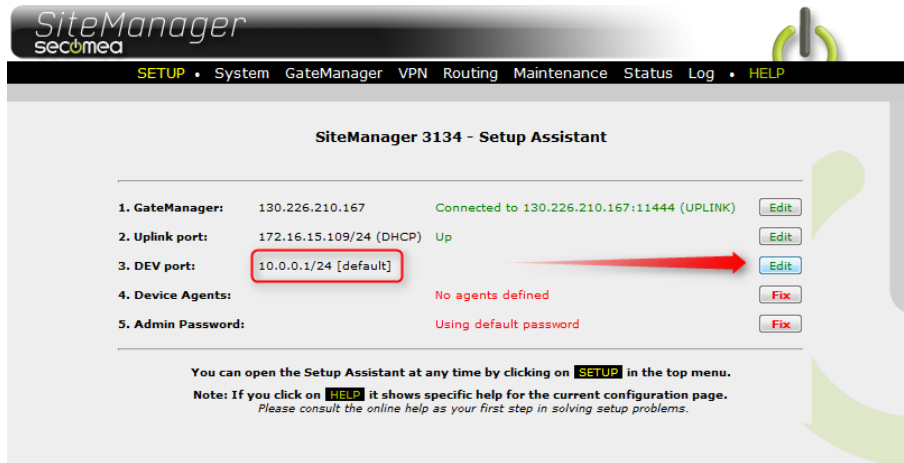
Note: If you want to connect to a device in the same network as the Uplink interface (ref. section 2.2), or if you want to connect a Serial or USB device to the SiteManager, you do not need to configure or connect anything to the DEV port of the SiteManager, and you can jump straight to **section 4.4 on page 20**.

The following steps assume we want to connect a device to the **DEV** port of the SiteManager, and create a separated device network.

30. Unless your device has an IP address already in the default DEV network of the SiteManager (10.0.0.0/24) you must change the IP address of the DEV port on the SiteManager.

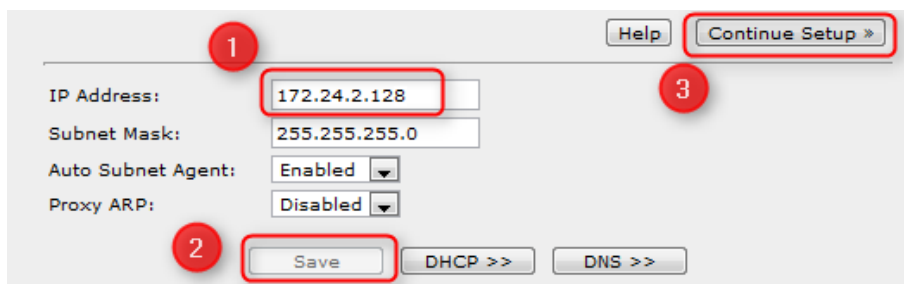
IMPORTANT: *This IP address must match the subnet of the device, and it must not, be in the same IP subnet as the Uplink port.*

Select **Edit** on the DEV port:



31. The PLC in our example has IP address 172.24.2.129/24 (/24 means it has subnet mask 255.255.255.0). So the address for the DEV port must be a free address in this subnet (172.24.2.x) , for instance 172.24.2.128.

Select **Save** and **Continue Setup**



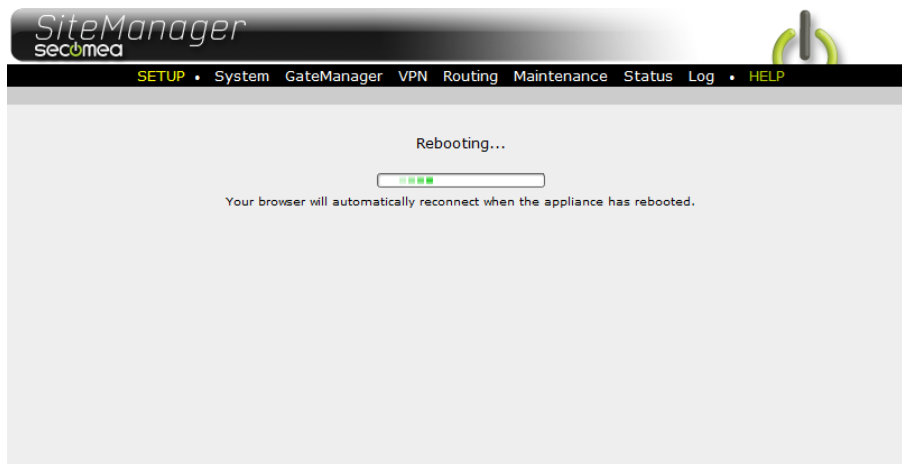
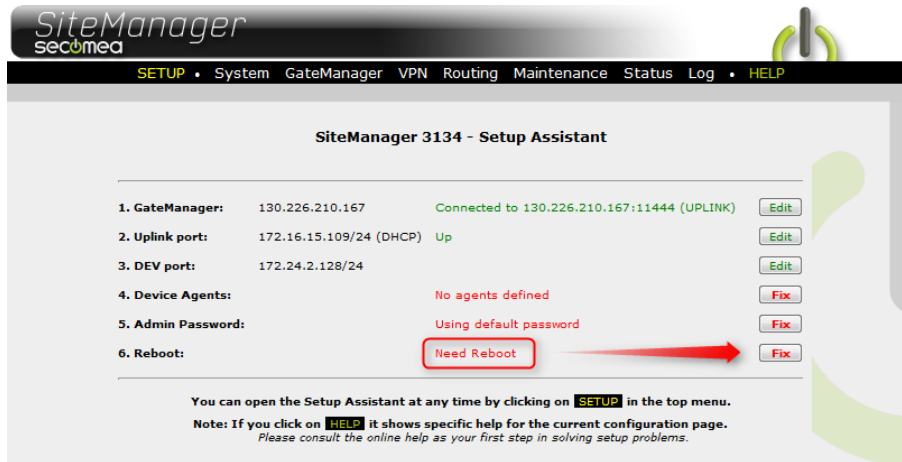
Hint: If your device is configured to receive an IP address from a DHCP server, you could have enabled DHCP in this menu, which would make the SiteManager act as a DHCP server that assigns IP addresses to devices on the DEV network.

You can even lock the DHCP lease to a device MAC address, so your device will always receive the same IP address.



32. Back in the Setup Assistance screen, you will notice that the SiteManager requires a reboot to activate changes (the new DEV IP address).

Select **Fix**, and activate the reboot:



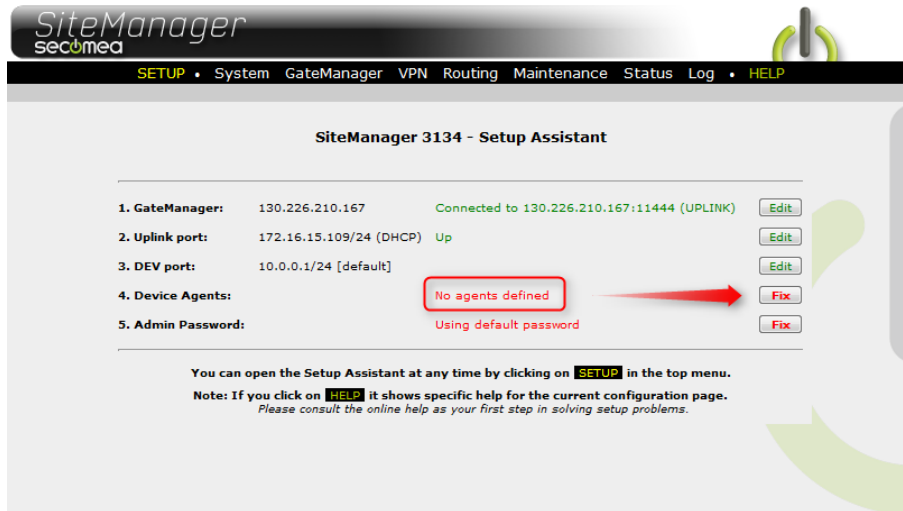
Hint: If your browser does not seem to automatically reconnect, try hit **F5** occasionally to see if has come online.



4.4. Configure the SiteManager Device Agent

33. The SiteManager Setup Assistant will indicate that no agents are configured.

Select **Fix**



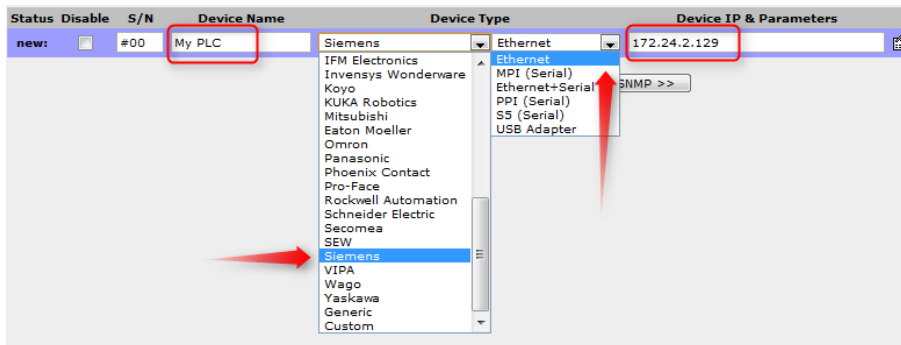
34. Click **New** to create a new agent.



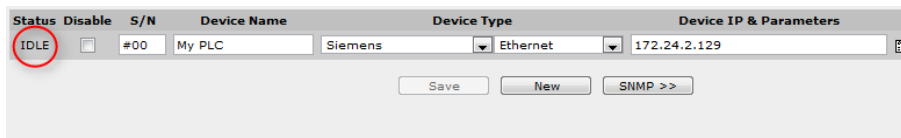


35. In this example we have chosen a Siemens S300 PLC and the **Device Type** should subsequently be “Siemens / Ethernet”.

Type an appropriate **Device Name**, and enter the **IP address** of the device.



36. Click **Save** and click the Refresh Button, until you see the agent go **IDLE**:



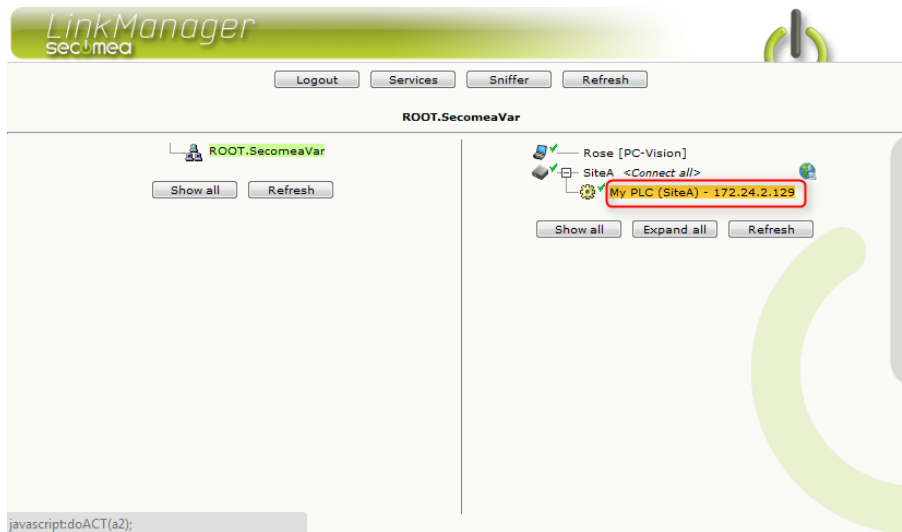
Hint: If it does not go idle, it means the SiteManager does not get a response from the device, and you should check the configured IP addresses and Ethernet wiring again.

37. Locate the browser window with the LinkManager. Click **Refresh** in the top menu, and you will now notice a “+” sign that will expand the SiteManager:

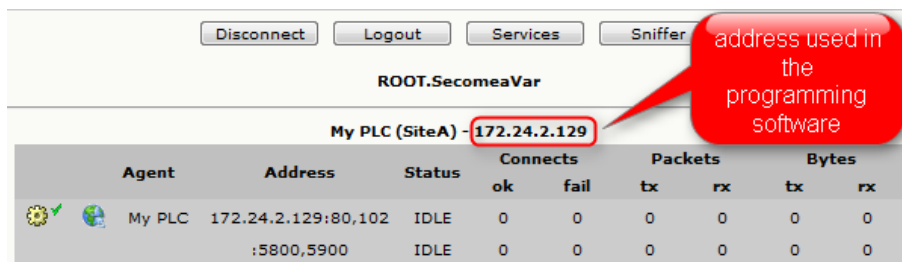




38. Expand it and **Click the text** of the Agent to connect to it.



39. The agent will now open all relevant ports for programming this type of PLC.

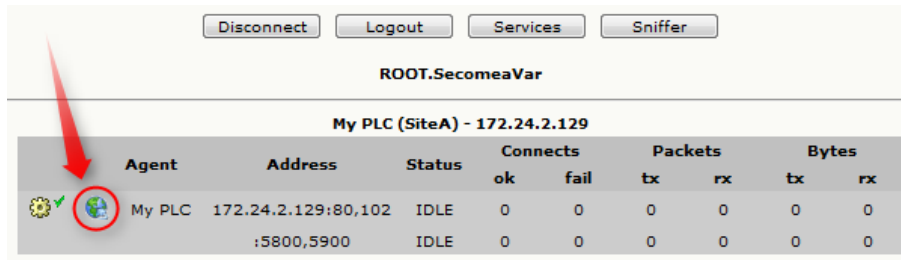


You now have IP access to the device from your PC through the LinkManager via the GateManager and SiteManager. You can therefore now connect directly to the IP address of the device using the native PLC software (in this example Siemens Step7 or the TIA portal).

For more details, check the guides for different types of equipment in section D here: <http://info.secomea.com/quick-start>




40. Depending on the type of agent, you may also get a **Globe icon** that allows you to connect to the Web GUI of the device:



ROOT.SecomeaVar

My PLC (SiteA) - 172.24.2.129

Agent	Address	Status	Connects		Packets		Bytes	
			ok	fail	tx	rx	tx	rx
	My PLC	172.24.2.129:80,102	IDLE	0	0	0	0	0
		:5800,5900	IDLE	0	0	0	0	0

41. This will bring you straight to the local Web interface of the PLC:





5. Summary

If the IP address in the above example represented a PLC in your network, you would just have to configure this address in your PLC programming software; just as if you were sitting local to it.

If you have performed this exercise with your LinkManager, SiteManager and the managed device connected to the same network, you may think: “is the connection not just done directly, and not via the LinkManager, GateManager and SiteManager?”

In fact, all communication always travels encrypted via the GateManager, so no matter where you place the SiteManager and the PLC device on the Internet, you will get the same experience; the device will seem like it was placed local to your PC, and be represented by its true local IP address.

You could even have all devices of a certain type placed on different sites use the same local IP address. This will allow you to have one PLC project with the same IP address for all PLCs.

If you experienced that things worked out as described in this guide, we suggest you go ahead and deploy the SiteManager at a real production site, configure real industrial devices, and try it out using your own programming software.

Everything is fully functional, and ready for production use!



6. Upgrading your GateManager Administrator account from BASIC to PREMIUM (P/N 26473)

With your current GateManager BASIC account, you are only using the GateManager administrator account to manage your LinkManager accounts.

You can, however, upgrade to **GateManager PREMIUM** and receive a Full GateManager administrator account.

This upgrade will add the following features to your current account:

- Organize equipment in domains per customer, factory, access levels or other logical structure (create domains and drag and drop devices and SiteManagers into relevant domains).
- Give LinkManager accounts individual access to domains (all LinkManager accounts will, when logging in, pull a license from the same LinkManager floating license pool on the server).
- Distribute messages for LinkManager users, that are automatically displayed to the users when logging into LinkManager (it could notification of server maintenance).
- Get overview of status for all connected equipment, and have the possibility to apply alert rules that will result in email reports when triggered (such as failed, connected etc.).
- Get access to audit logs for all equipment (who did what, when).
- Create an unlimited number of co-administrators for GateManager Console access.
- Administer all GateManager Console and LinkManager accounts, and for instance remove access for resigned employees, or define time limited access for certain accounts.

You can order a GateManager PREMIUM account on Secomea part number 26473.

Notices

Publication and copyright

© **Copyright Secomea A/S 2008-2015**. All rights reserved. You may download and print a copy for your own use. As a high-level administrator, you may use whatever you like from contents of this document to create your own instructions for deploying our products. Otherwise, no part of this document may be copied or reproduced in any way, without the written consent of Secomea A/S. We would appreciate getting a copy of the material you produce in order to make our own material better and – if you give us permission – to inspire other users.

Trademarks

SiteManager™, LinkManager™ and GateManager™ are trademarks of Secomea A/S. Other trademarks are the property of their respective owners.

Disclaimer

Secomea A/S reserves the right to make changes to this publication and to the products described herein without notice. The publication of this document does not represent a commitment on the part of Secomea A/S. Considerable effort has been made to ensure that this publication is free of inaccuracies and omissions but we cannot guarantee that there are none.

The following paragraph does not apply to any country or state where such provisions are inconsistent with local law:

SECOMEA A/S PROVIDES THIS PUBLICATION "AS IS" WITHOUT WARRANTY OF ANY KIND, EITHER EXPRESS OR IMPLIED, INCLUDING, BUT NOT LIMITED TO, THE IMPLIED WARRANTIES OF MERCHANTABILITY OR FITNESS FOR A PARTICULAR PURPOSE

SECOMEA A/S SHALL NOT BE LIABLE FOR ANY DIRECT, INDIRECT, INCIDENTAL, CONSEQUENTIAL, OR OTHER DAMAGE ALLEGED IN CONNECTION WITH THE FURNISHING OR USE OF THIS INFORMATION.

Secomea A/S
Denmark

CVR No. DK 31 36 60 38

E-mail: sales@secomea.com
www.secomea.com