

**MICROSCAN.**

LVS<sup>®</sup> 95XX Series  
Software Installation Guide

Copyright ©2017  
Omron Microscan Systems, Inc.  
Tel: +1.425.226.5700 / 800.762.1149  
Fax: +1.425.226.8250

All rights reserved. The information contained herein is proprietary and is provided solely for the purpose of allowing customers to operate and/or service Omron Microscan manufactured equipment and is not to be released, reproduced, or used for any other purpose without written permission of Omron Microscan.

Throughout this manual, trademarked names might be used. We state herein that we are using the names to the benefit of the trademark owner, with no intention of infringement.

### **GS1 Solution Partner**



### ***Disclaimer***

The information and specifications described in this manual are subject to change without notice.

### ***Latest Manual Version***

For the latest version of this manual, see the Download Center on our web site at:  
[www.microscan.com](http://www.microscan.com).

### ***Technical Support***

Contact your local Microscan Technical Support if assistance is needed:  
[Americas\\_support@microscan.com](mailto:Americas_support@microscan.com)  
[EMEA\\_support@microscan.com](mailto:EMEA_support@microscan.com)  
[China\\_support@microscan.com](mailto:China_support@microscan.com)  
[APAC\\_support@microscan.com](mailto:APAC_support@microscan.com)

### ***Warranty***

For current warranty information, see: [www.microscan.com/warranty](http://www.microscan.com/warranty).

### **Omron Microscan Systems, Inc.**

**United States Corporate Headquarters**  
+1.425.226.5700 / 800.762.1149

**United States Northeast Technology Center**  
+1.603.598.8400 / 800.468.9503

**European Headquarters**  
+31.172.423360

**Asia Pacific Headquarters**  
+65.6846.1214

# Table of Contents

<b>IMPORTANT – READ PRIOR TO INSTALLATION .....</b>	<b>4</b>
<b>SYSTEM MANUALS .....</b>	<b>5</b>
Windows® 7 Operating Instructions .....	5
Windows® 10 Professional Operating Instructions .....	6
Translated Operating Instructions .....	6
<b>SAFETY INSTRUCTIONS .....</b>	<b>7</b>
<b>INSTALLATION CHECKLIST .....</b>	<b>8</b>
<b>INSTALLATION STEPS – READ PRIOR TO INSTALLATION .....</b>	<b>9</b>
Windows® 7 Installation Steps .....	9
Windows® 10 Professional Installation Steps .....	15
<b>APPENDIX A: LVS-9510 AUXILIARY READHEAD INSTALLATION STEPS.....</b>	<b>21</b>
Installation Checklist .....	21
Installation Steps .....	21

## Important – Read Prior to Installation

Please read the information below before installing the LVS-95XX system.

- The LVS-95XX system arrives to your site packaged in a specially designed shipping carton. DO NOT discard this shipping carton in case you must ship or store the system for any reason. Failure to use this carton when returning your product to Microscan will void warranty.
- The LVS-95XX system supports Windows® 7 and Windows® 10. The LVS-95XX system does not support Windows® XP Professional or Windows® Vista.
- All LVS-95XX systems must use the calibration card and installation flash drive issued with the system. The LVS-95XX system, calibration card and installation flash drive use the same serial number and must be used in conjunction with each other to obtain correct calibration results. Failure to use the calibration card and installation flash drive issued with the system will result in incorrect calibration results.
- If a USB device fails to load automatically, manually load the USB device using Device Manager. Consult your Systems Administrator for assistance, if required.
- If using an LVS-9510:
  - Minute imperfections may be seen in the LVS-9510 glass. These imperfections are minor and caused by the anti-reflective coating process. The imperfections will not affect the operation of the LVS-9510.
  - Treat the LVS-9510 as laboratory equipment, meaning that extreme care and delicacy should be used when servicing the equipment.
  - Routine cleaning of the viewing window is recommended weekly to maintain optimum performance. To maintain a clean and clear appearance, use a soft, lint-free, non-abrasive towel or cloth and clean only the outside of the viewing window. Use a commercially available household glass cleaner, such as Windex®, Glassex®, VISS®, and Mr. Muscle®. Do not use an industrial-strength glass cleaner. Do not clean the inside of the viewing window due to an anti-reflective coating.
  - If you have any questions or concerns about the performance of this equipment, please call your local Microscan distributor or Microscan technical support.

# System Manuals

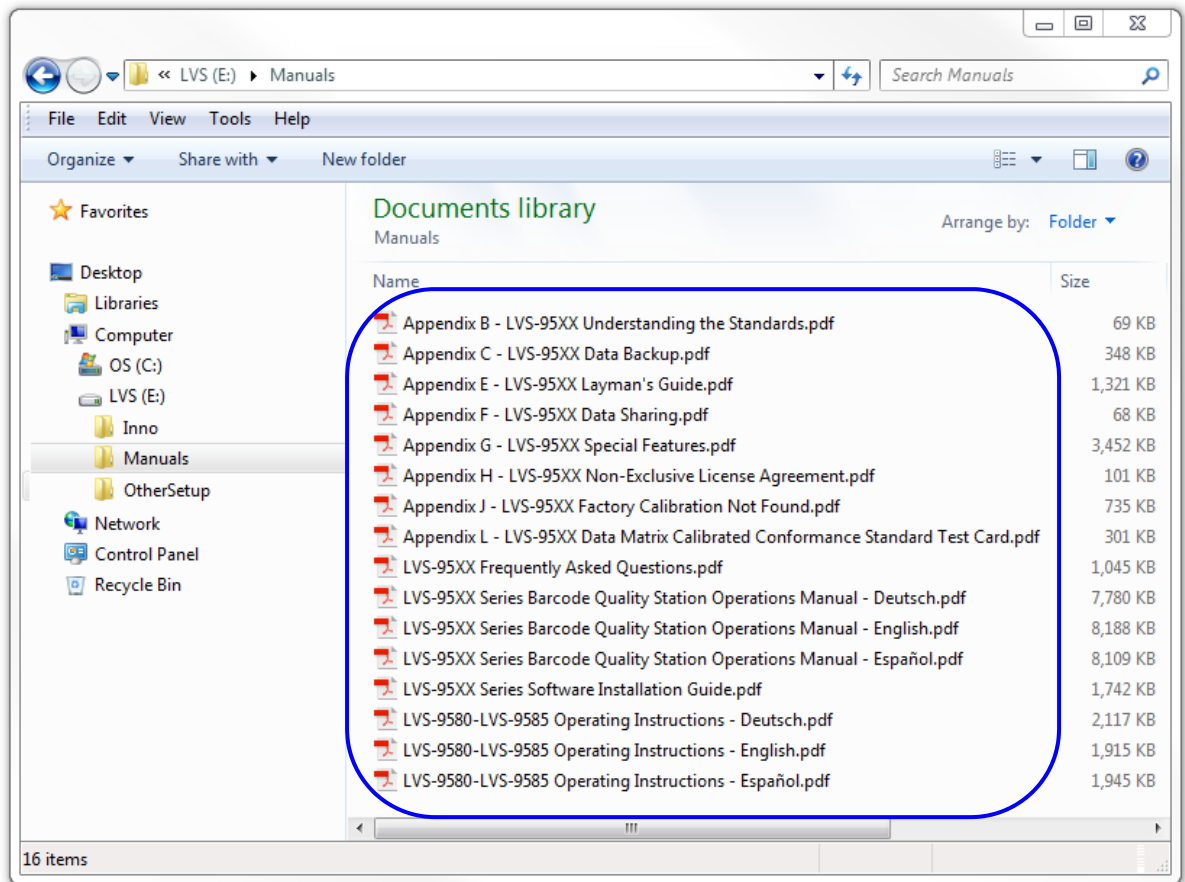
All LVS-95XX system manuals are stored in the following locations:

Installation Flash Drive	Each system purchase is supplied with an installation flash drive containing installation software and system manuals.
Host Computer	After successful installation of the LVS-95XX software, the system manuals are located at the paths below: <b>Windows® 7 (64-bit):</b> C:\Program Files (x86)\Microscan\LVS-95XX\Manuals <b>Windows® 7 (32-bit):</b> C:\Program Files\Microscan\LVS-95XX\Manuals <b>Windows® 10:</b> C:\Program Files (x86)\Microscan\LVS-95XX\Manuals

System manuals are also located on the installation flash drive. If you would like to view or print the manuals located on the installation flash drive **prior to installing LVS-95XX software**, follow the steps below.

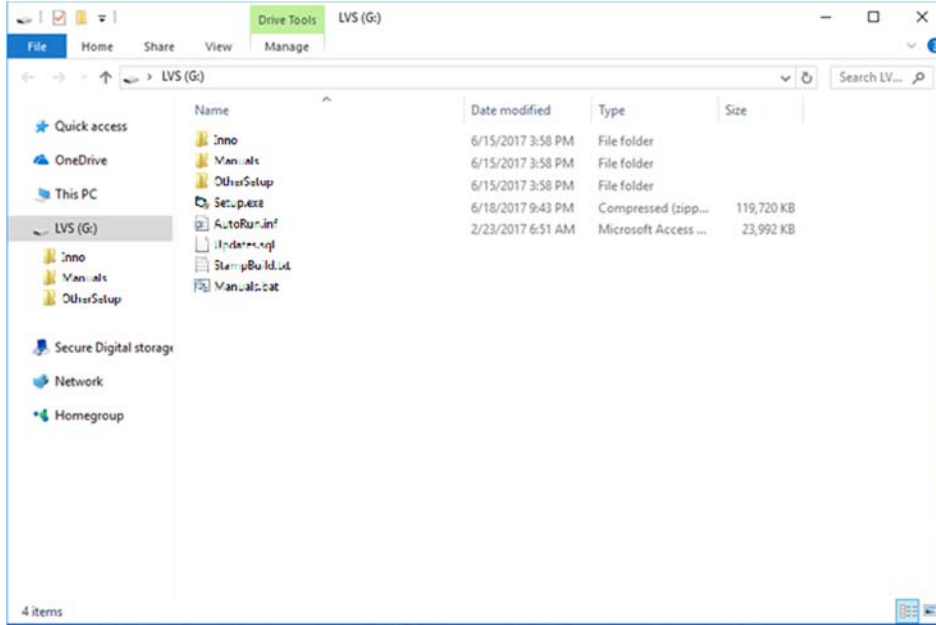
## Windows® 7 Operating Instructions

1. Insert the installation flash drive into the USB port.
2. Navigate to the “Manuals” folder located on the installation flash drive.

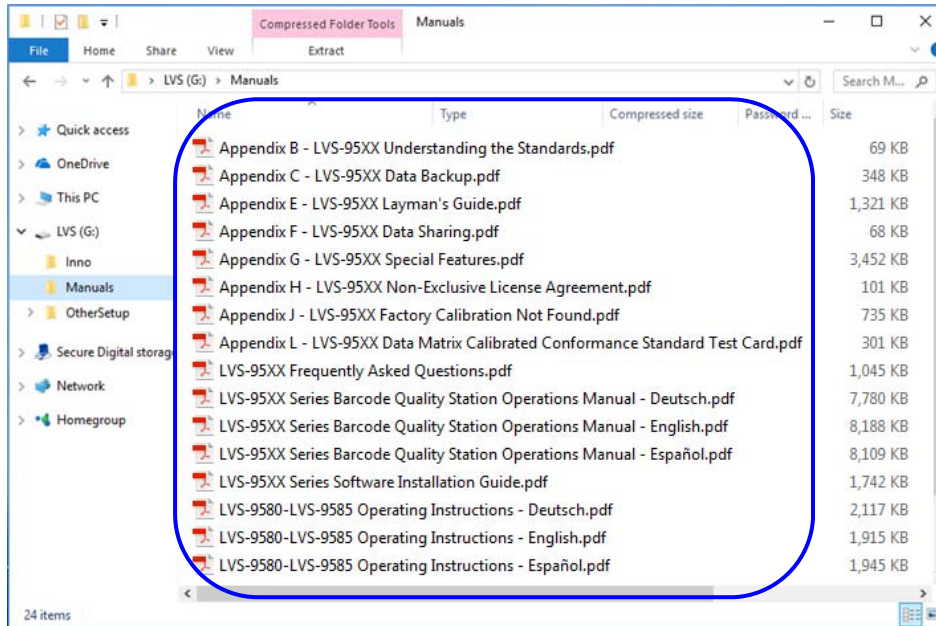


## Windows® 10 Professional Operating Instructions

1. Insert the installation flash drive into the USB port. The following window shows the contents of the flash drive.



2. Click on the “Manuals” folder to view and access documentation.



## Translated Operating Instructions

Translated Operating Instructions are available in German and Spanish. Translated documentation can be found in the “Manuals” folder shown above.

## Safety Instructions

The LVS-95XX system has been carefully designed to provide years of safe, reliable performance. However, as with all electrical equipment, there are some basic precautions you should follow to avoid personal injury or damage to the system:

- Before using the system, carefully read all the installation and operating instructions.
- Observe all warning instruction labels on the system.
- Never insert anything into the openings of the system.
- Do not use the system near water or spill liquid into it.
- All components used to create your system are UL and CE approved. All circuits were designed to incorporate maximum safety. However, any equipment using electrical voltages may cause personal injury if improperly handled.
- Do not attempt to work on the system with the main power lines connected.
- Ensure that the AC power source matches the ratings listed for the system. If unsure, check with your dealer or local utility provider.
- Do not place the AC power cord where it can be stepped on. If the AC power cord becomes damaged or frayed, replace it immediately.
- Avoid looking directly into any system lights. If you need to examine the lights, or look at any component near the lights, be sure to first turn off the lights. If the lights cannot be turned off, then wear polarized/UV blocking sunglasses while examining the lights.
- To avoid damaging the system, turn off and unplug the system before cleaning.
- If the system ever needs repair, consult Microscan or your Microscan Distributor.

## Installation Checklist

Please ensure you have the required items listed below before installing the LVS-95XX system. Contact your Microscan sales representative if any items are missing.

- LVS-95XX system
- USB cable
- EAN/UPC NIST traceable Calibrated Conformance Standard Test Card used for calibrating the LVS-95XX system
- Installation flash drive (includes LVS-95XX software and “LVS-95XX Series Barcode Quality Station Operations Manual”)
- “LVS-95XX Series Software Installation Guide” (this document)
- Flash Drive (for LVS-9570 systems only). Contains “LVS-9570 Operating Instructions” and demonstration video

**IMPORTANT:** All LVS-95XX systems must use the calibration card and installation flash drive issued with the system. The LVS-95XX system, calibration card and installation flash drive use the same serial number and must be used in conjunction with each other to obtain correct calibration results. Failure to use the calibration card and installation flash drive issued with the system will result in incorrect calibration results.



## Installation Steps – Read Prior to Installation

This section documents the software installation steps for Windows® 7 and Windows® 10; thus, you must know which operating system resides on the computer running the LVS-95XX software.

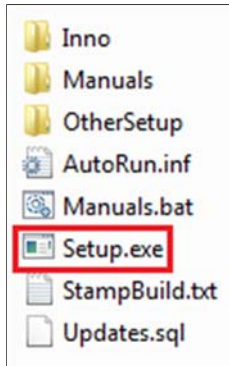
The LVS-95XX software supports Windows® 7 (32-bit and 64-bit) and Windows® 10 operating systems. Windows® XP Professional and Windows® Vista are not supported.

Before installing the LVS-95XX software, ensure that no USB cables are plugged into the LVS-95XX USB ports. You are directed at a particular step in this guide when to plug in the USB cable.

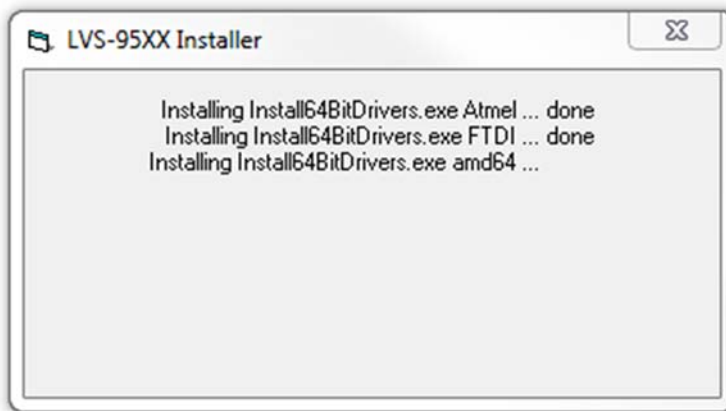
### Windows® 7 Installation Steps

Follow the steps below to install the LVS-95XX software on a Windows® 7 operating system.

1. Insert the installation flash drive into the computer's USB port. Double-click "Setup.exe".



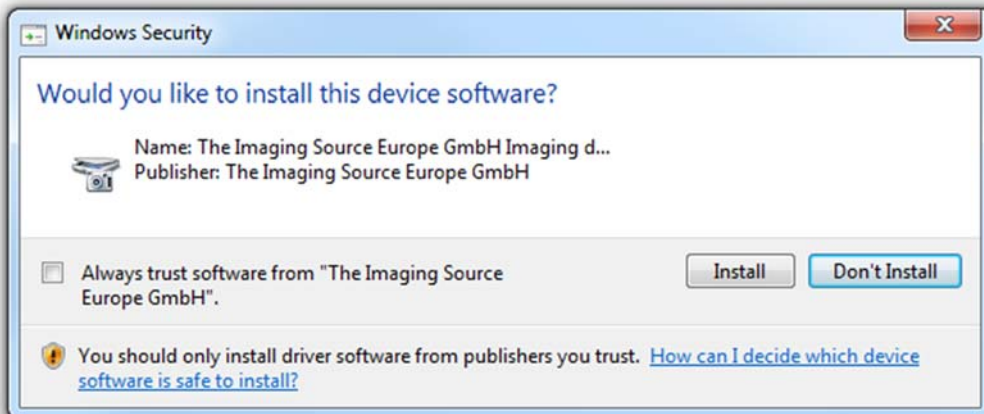
2. An "LVS Installer" window will appear.



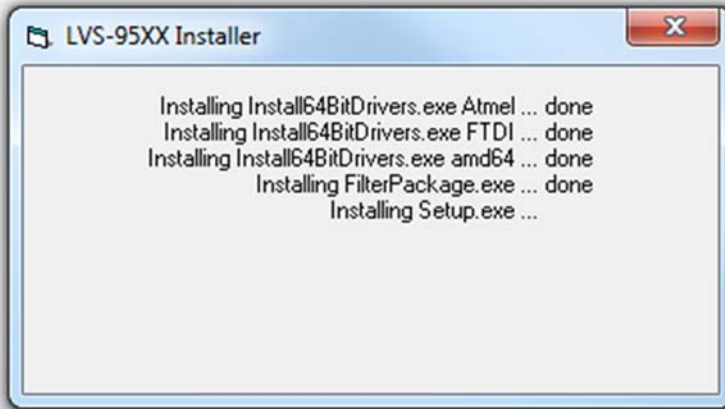
3. Click "Install" when you see the "Windows Security" dialog for Atmel:



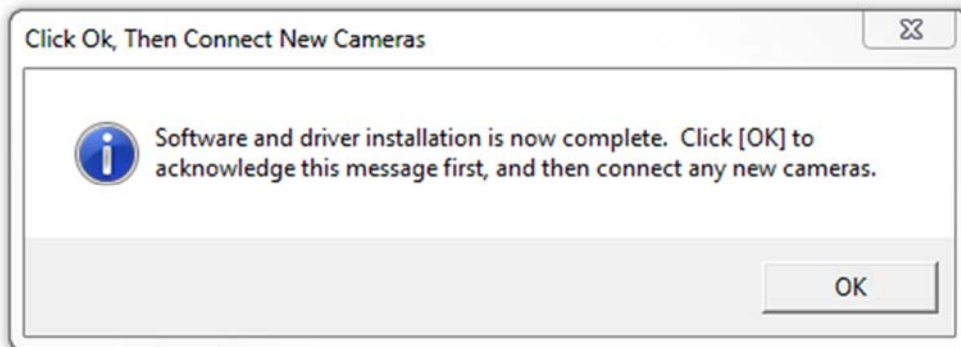
4. Click "Install" when you see the "Windows Security" dialog for The Imaging Source:



5. You will see the “LVS Installer” window again.



6. Click “OK” when this message appears:



7. Using the supplied USB cable, insert one end of the USB cable into the computer's USB port; insert the other end of the USB cable into the USB port on the LVS-95XX verifier.

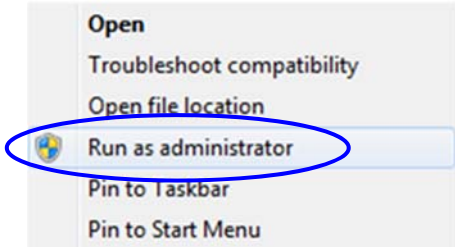
**IMPORTANT:** The LVS-9570 must connect to a dedicated USB port on the computer; the LVS-9570 cannot connect to an external USB Hub unless the Hub is externally powered. Failure to comply with these rules results in abnormal contrast readings.

**Tip:** A green light on the back of the LVS-9570 turns on after the LVS-95XX software is installed.

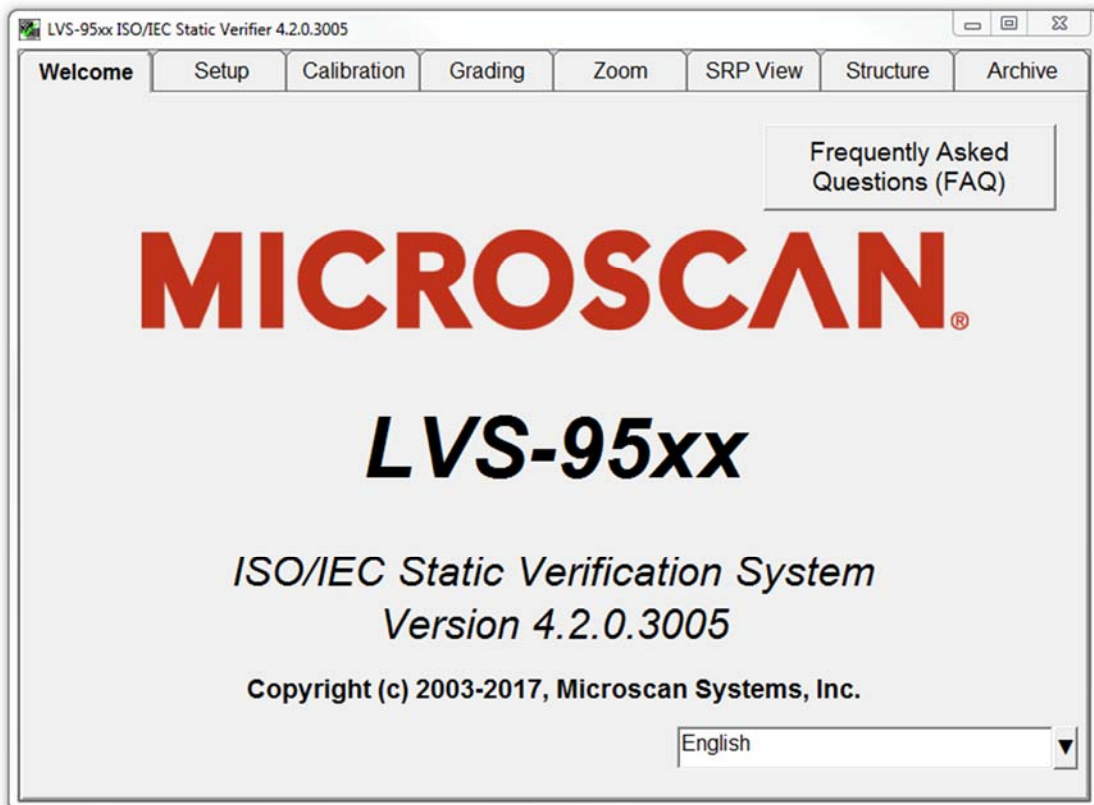
---

8. Remove the installation flash drive from the USB port.
9. Restart the computer.

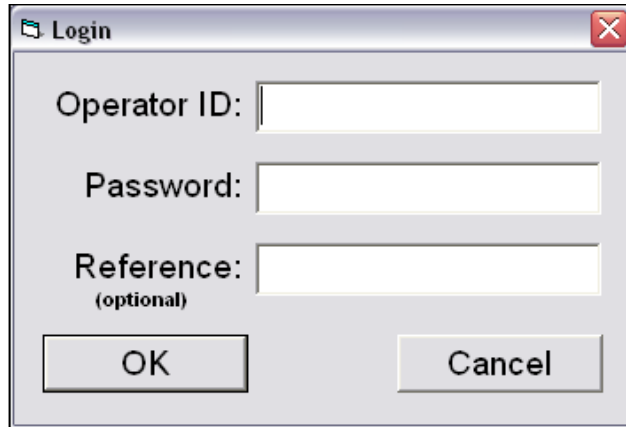
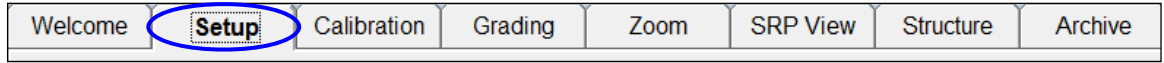
**IMPORTANT note for Windows® 7 64-bit operating systems:** If LVS-95XX software does not automatically restart, right-click on the LVS-95XX desktop icon and select “Run as administrator.” LVS-95XX software then opens. This is a one-time step and is not required the next time you log on to LVS-95XX software.



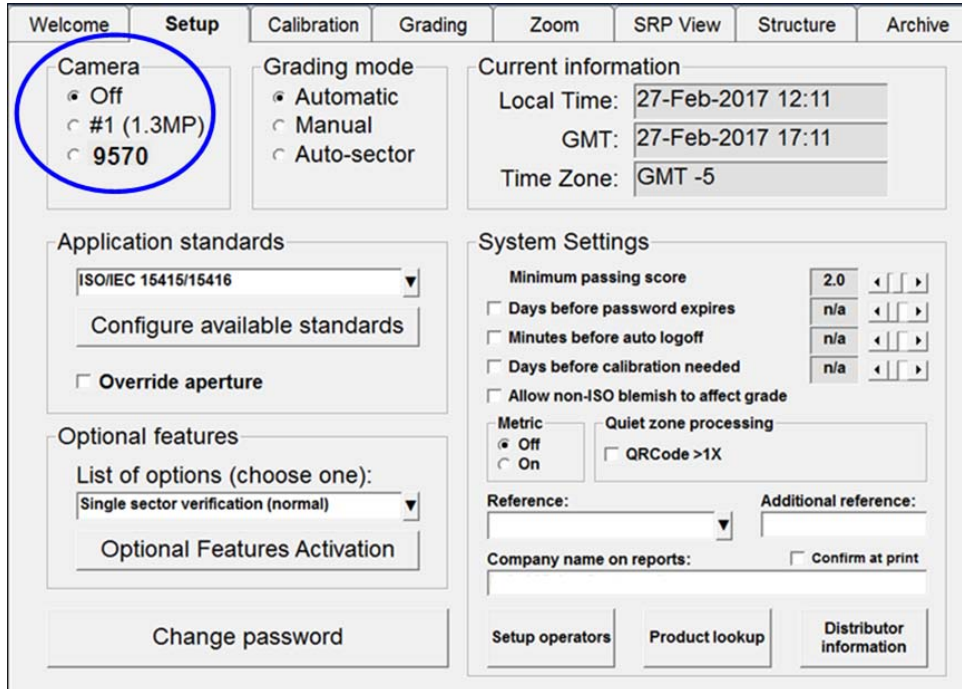
10. The “Welcome” screen automatically appears if the software loaded correctly.  
If the software does not launch correctly, contact your local Microscan Distributor or Microscan Technical Support.



- Click the "Setup" tab. The "Login" box appears. Enter "admin" (not case sensitive) in the "Operator ID" field and "admin" (not case sensitive) in the "Password" field, and then click "OK."



- Within the "Camera" section, select the desired camera. Your screen may look differently depending on which cameras are being used.

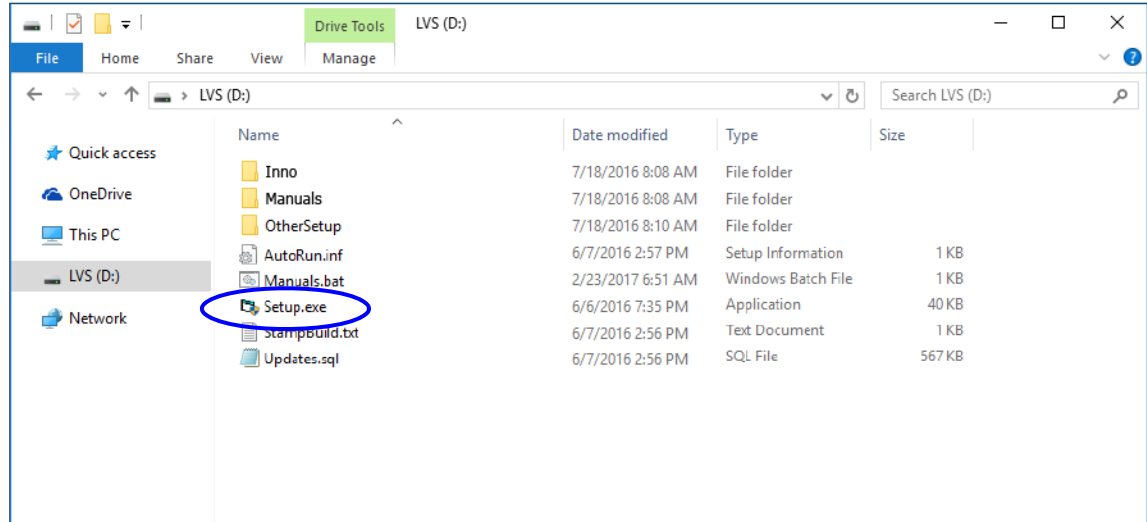


13. Installation is complete. The system you are using must now be calibrated. Read the information below for next steps.
- **LVS-9570 Systems:** Calibration steps are outlined in the following guides:
    - “LVS-9570 Operating Instructions” guide (see “LVS-95XX Software Steps” section). This manual is located on the installation flash drive and on the flash drive supplied with your LVS-9570 system.
    - “LVS-95XX Series Barcode Quality Station Operations Manual” (see “Calibration Tab” section). This manual is located on the installation flash drive supplied with your system.
  - **LVS-9580 Systems:** Calibration steps are outlined in the following guides:
    - “LVS-9580 Operating Instructions” guide (see “LVS-95XX Software Steps” section). This manual is located on the installation flash drive supplied with your LVS-9580 system.
    - “LVS-95XX Series Barcode Quality Station Operations Manual” (see “Calibration Tab” section). This manual is located on the installation flash drive supplied with your system.
  - **LVS-9510 Systems:** Calibration steps are outlined in the “LVS-95XX Series Barcode Quality Station Operations Manual” (see “Calibration Tab” section). This manual is located on the installation flash drive supplied with your system.

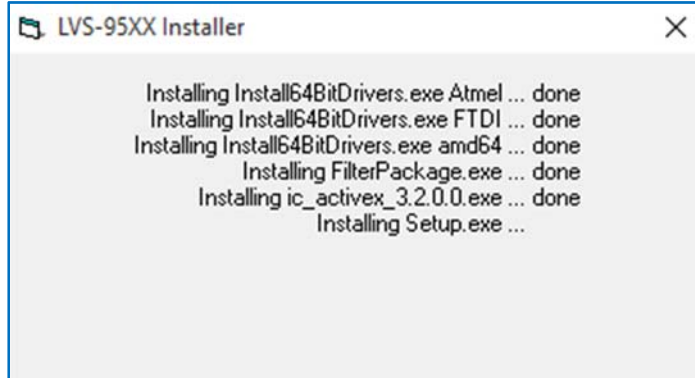
## Windows® 10 Professional Installation Steps

Follow the steps below to install the LVS-95XX software on a Windows® 10 Professional operating system.

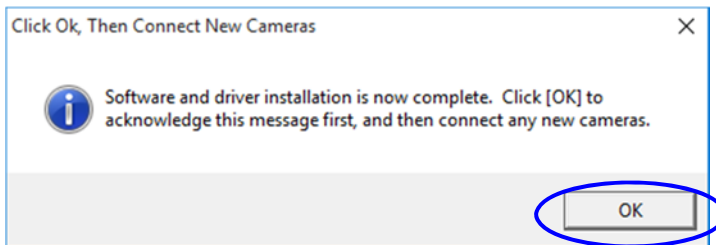
1. Insert the installation flash drive into the computer's USB port. Double-click the "Setup.exe" file to begin the LVS-95XX software installation process.



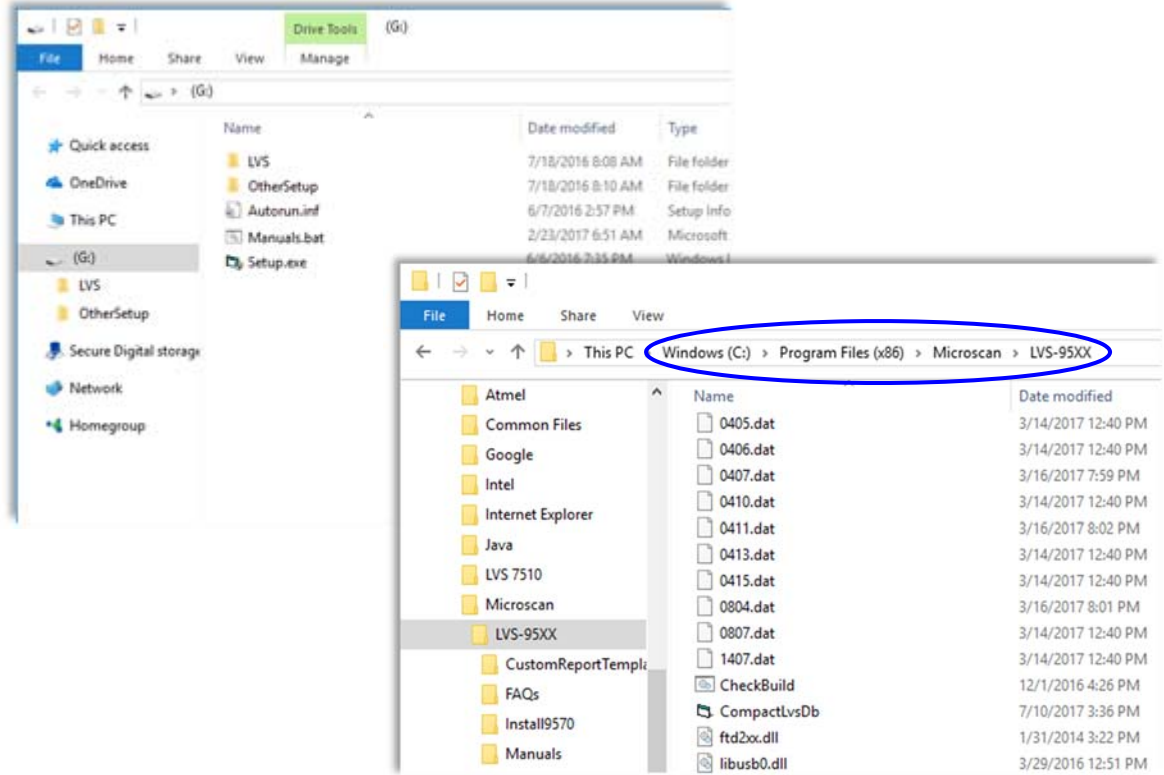
2. The following screen appears indicating that the LVS-95XX software is installing.



3. When the software installation is complete, the following screen appears. Click "OK".



- Return to File Explorer to view the contents of the installation flash drive. Open a second window to view the folder where the LVS-95XX software has been installed (C:\Program Files (x86)\Microscan\LVS-95XX).



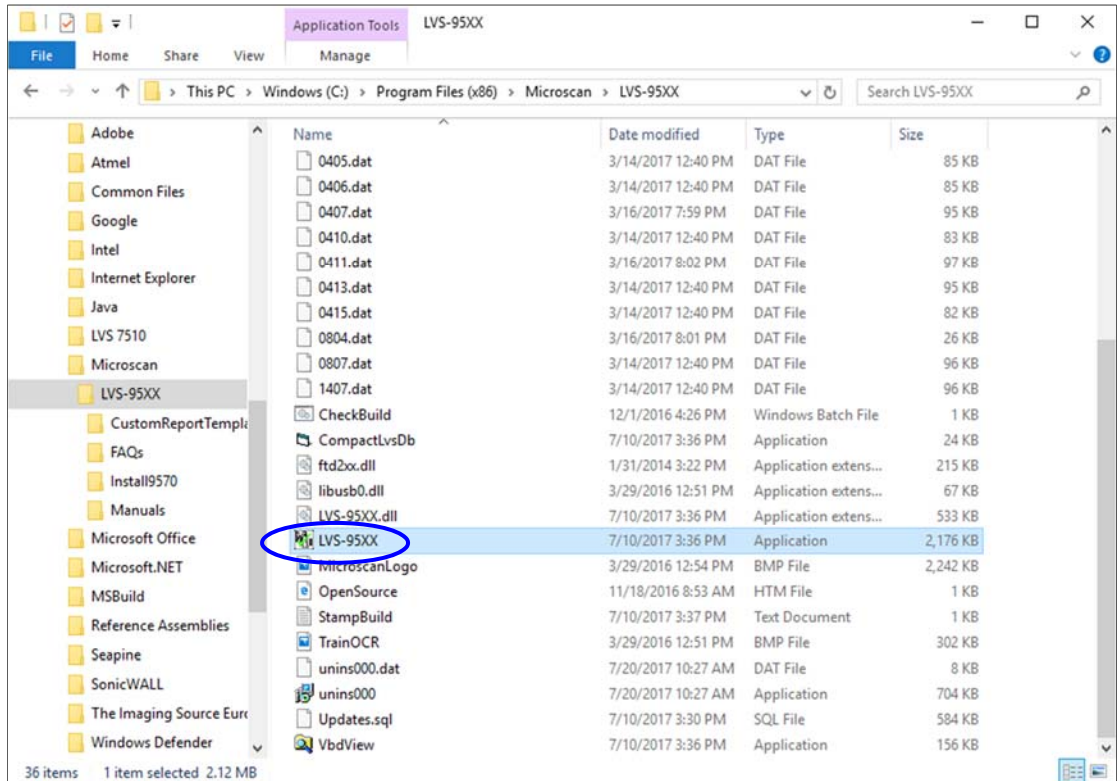
- Using the supplied USB cable, insert one end of the USB cable into the computer's USB port. Insert the other end of the USB cable into the USB port on the LVS-95XX verifier.

**IMPORTANT:** The LVS-9570 must connect to a dedicated USB port on the computer; the LVS- 9570 cannot connect to an external USB Hub unless the Hub is externally powered. Failure to comply with these rules results in abnormal contrast readings.

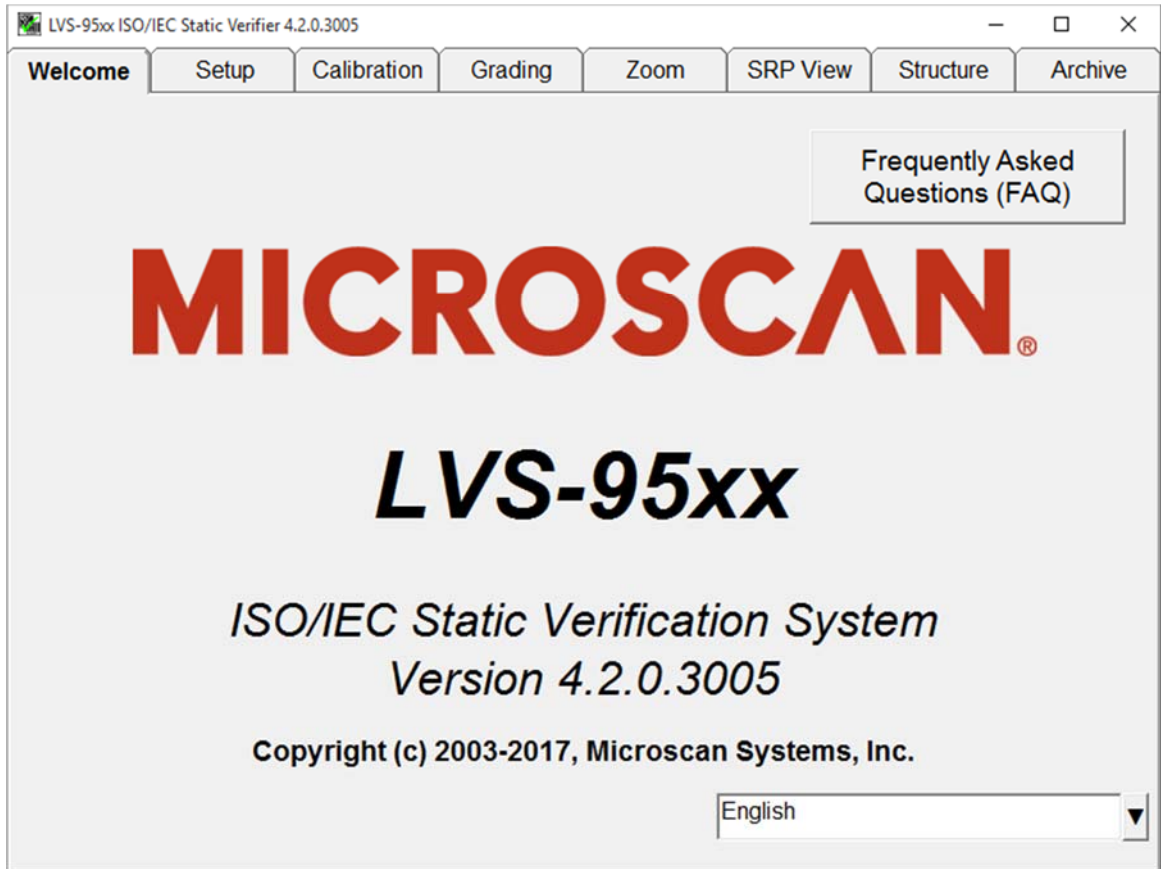


**Note:** A green light on the back of the LVS-9570 turns on after LVS-95XX software is installed.

6. Remove the installation flash drive from the USB port.
7. Return to the window to view the folder where the LVS-95XX software has been installed (C:\Program Files (x86)\Microscan\LVS-95XX). Double-click the “LVS-95XX.exe” file to launch the software.



8. The “Welcome” screen automatically appears if the software loaded correctly. If the software does not launch correctly, contact your local Microscan Distributor or Microscan Technical Support.



- Click the "Setup" tab. The "Login" box appears. Enter "admin" (not case sensitive) in the "Operator ID" field and "admin" (not case sensitive) in the "Password" field, and then click "OK."

The screenshot shows a navigation bar with tabs: Welcome, **Setup**, Calibration, Grading, Zoom, SRP View, Structure, and Archive. Below the navigation bar, a 'Login' dialog box is displayed. The dialog box has a title bar with a close button (X) and contains three input fields: 'Operator ID:', 'Password:', and 'Reference: (optional)'. At the bottom of the dialog box are two buttons: 'OK' and 'Cancel'.

- In the "Camera" section, select the desired camera. Your screen may look differently depending on which cameras are being used.

The screenshot shows the 'Setup' tab selected in the navigation bar. The main content area is divided into several sections:
 

- Camera:** A section with three radio button options: 'Off' (selected), '#1 (1.3MP)', and '9570'. This section is circled in blue.
- Grading mode:** A section with three radio button options: 'Automatic' (selected), 'Manual', and 'Auto-sector'.
- Current information:** A section with three rows of text: 'Local Time: 27-Feb-2017 12:11', 'GMT: 27-Feb-2017 17:11', and 'Time Zone: GMT -5'.
- Application standards:** A section with a dropdown menu showing 'ISO/IEC 15415/15416' and a button labeled 'Configure available standards'. There is also a checkbox for 'Override aperture'.
- System Settings:** A section with various settings:
  - 'Minimum passing score' set to '2.0' with left and right arrow buttons.
  - 'Days before password expires' set to 'n/a' with left and right arrow buttons.
  - 'Minutes before auto logoff' set to 'n/a' with left and right arrow buttons.
  - 'Days before calibration needed' set to 'n/a' with left and right arrow buttons.
  - 'Allow non-ISO blemish to affect grade' checkbox.
  - 'Metric' radio buttons: 'Off' (selected) and 'On'.
  - 'Quiet zone processing' checkbox with a label 'QRCode >1X'.
  - 'Reference:' and 'Additional reference:' dropdown menus.
  - 'Company name on reports:' text field and a 'Confirm at print' checkbox.
- Optional features:** A section with a dropdown menu labeled 'List of options (choose one):' showing 'Single sector verification (normal)' and a button labeled 'Optional Features Activation'.
- Change password:** A button at the bottom left.
- Bottom navigation:** Three buttons: 'Setup operators', 'Product lookup', and 'Distributor information'.

11. Installation is complete. The system you are using must now be calibrated. Read the information below for next steps.
- **LVS-9570 Systems:** Calibration steps are outlined in the following documents:
    - *LVS-9570 Operating Instructions* (see “LVS-95XX Software Steps” section). This manual is located on the installation flash drive supplied with your LVS-9570 system.
    - *LVS-95XX Series Barcode Quality Station Operations Manual* (see “Calibration Tab” section). This manual is located on the installation flash drive supplied with your LVS-9570 system.
  - **LVS-9580 and LVS-9585 Systems:** Calibration steps are outlined in the following guides:
    - *LVS-9580/LVS-9585 Operating Instructions* (see “LVS-95XX Software Steps” section). This manual is located on the installation flash drive supplied with your LVS-9580 or LVS-9585 system.
    - *LVS-95XX Series Barcode Quality Station Operations Manual* (see “Calibration Tab” section). This manual is located on the installation flash drive supplied with your LVS-9580 or LVS-9585 system.
  - **LVS-9510 Systems:** Calibration steps are outlined in the *LVS-95XX Series Barcode Quality Station Operations Manual* (see “Calibration Tab” section). This manual is located on the installation flash drive supplied with your LVS-9510 system.

## Appendix A: LVS-9510 Auxiliary Readhead Installation Steps

Follow the steps below to install an LVS-9510 Auxiliary Readhead.

The customer-supplied computer connecting to the 5.0 MP Auxiliary Readhead must be running LVS-95XX software version 3.0.8 or higher.

### Installation Checklist

Ensure the following items arrived in your shipping carton. Contact your Microscan sales representative if any items are missing.

- Auxiliary Readhead
- USB cable
- Power cord (for North American shipments only)
- Power supply (requires localized power cord for shipments outside North America)
- “LVS-95XX Series Software Installation Guide” (this document)
- Calibrated Conformance Test Card (Microscan calibrates the Auxiliary Readhead prior to shipment)

**IMPORTANT:** The Auxiliary Readhead arrives to your site packaged in a specially designed shipping carton. DO NOT discard this shipping carton in case you must ship or store the system for any reason. Failure to use this carton when returning your product to Microscan will void warranty.

### Installation Steps

1. Place the Auxiliary Readhead on a flat surface away from strong overhead lights or sunlight.
2. Locate the power cord. Plug one end of the power cord into the power supply; plug the other end of the power cord into a power outlet.
3. Plug the power supply cable into the Auxiliary Readhead (located on right side panel).
4. Locate the USB cable. Insert one end of the cable into the USB port on the right side panel of the Auxiliary Readhead (USB port must be USB 2.0 compliant); plug the other end into the computer’s USB port.
5. Turn on the LED light switch located on the right side panel of the Auxiliary Readhead.

**IMPORTANT:** Avoid looking directly into the lights. If you need to examine the lights, or look at any component near the lights, be sure to first turn off the lights.

6. Installation of the Auxiliary Readhead is complete. Auxiliary Readhead cameras are identified on the **Setup** tab within the **Camera** section.

